

# EN

OPERATING MANUAL  
OIL HEATER



## table of contents

Notes regarding the operating manual.....	1
Safety .....	2
Information about the device.....	4
Transport and storage.....	6
Assembly and installation.....	7
Operation .....	11
Available accessories.....	12
Errors and faults .....	12
Technical annex.....	15
Disposal .....	20

## Notes regarding the operating manual

### Symbols



#### Warning of electrical voltage

This symbol indicates dangers to the life and health of persons due to electrical voltage.



#### Warning of hot surface

This symbol indicates dangers to the life and health of persons due to hot surface.



#### Warning

This signal word indicates a hazard with an average risk level which, if not avoided, can result in serious injury or death.



#### Caution

This signal word indicates a hazard with a low risk level which, if not avoided, can result in minor or moderate injury.

#### Notice

This signal word indicates important information (e.g. material damage), but does not indicate hazards.



#### Info

Information marked with this symbol helps you to carry out your tasks quickly and safely.



#### Follow the manual

Information marked with this symbol indicates that the operating manual must be observed.

You can download the current version of the operating manual and the EU declaration of conformity via the following link:



IDS 30 F



<http://download.trotec.com/?sku=1430000128&id=1>

### Legal notice

This release replaces all previous versions. No part of this publication may be reproduced without written permission from Trotec GmbH & Co. KG. The same applies for electronically processing, duplicating or spreading the publication. Subject to technical changes. All rights reserved. Trademarks are used without guarantee that they may be used freely and primarily following the spelling of the manufacturer. Product names are registered.

Changes to construction in the interests of constant improvements to the product, as well as changes to the shape and colour are reserved.

The scope of delivery may vary from product images. This document was created with all due care. Trotec GmbH & Co. KG accepts no liability whatsoever for possible mistakes or omissions.

© Trotec GmbH & Co. KG

### Warranty and liability

The device complies with the fundamental health and safety requirements of the applicable EU regulations and was tested at the factory for perfect functionality multiple times.

When making a warranty claim, supply the device number (see the rear of the device).

When manufacturer's instructions or legal regulations have not been followed, or after unauthorised changes to the device are made, the manufacturer is not responsible for the resulting damages. Changes to the device or unauthorised replacement of individual parts can drastically impact the electrical safety of this product and will result in the loss of the warranty. Liability does not extend to damages to people or property caused by the device being used other than as described in the instructions in this operating manual. Subject to changes to technical design and model changes as part of constant development and product improvement without prior notice.

No liability is accepted for damages resulting from improper use. In such a case, any warranty claims will be voided also.

## Safety

**Read this manual carefully before starting or using the device. Always store the manual in the immediate vicinity of the device or its site of use!**



### Warning

**Read all safety warnings and all instructions.**

Failure to follow the warnings and instructions may result in electric shock, fire and / or serious injury.

**Save all warnings and instructions for future reference.**

This appliance can be used by children aged from 8 years and above and persons with reduced physical, sensory or mental capabilities or lack of experience and knowledge if they have been given supervision or instruction concerning use of the appliance in a safe way and understand the hazards involved.

Children shall not play with the appliance. Cleaning and user maintenance shall not be made by children without supervision.

- Do not use the device in potentially explosive rooms.
- Do not use the device in aggressive atmosphere.
- Set the device up in an upright and stable position.
- Let the device dry out after a wet clean. Do not operate it when wet.
- Do not use the device with wet or damp hands.
- Do not expose the device to directly squirting water.
- Never insert any objects or limbs into the device.
- Do not cover or transport the device during operation.
- Do not sit on the device.
- This appliance is not a toy! Keep away from children and animals. Do not leave the device unattended during operation.
- Check accessories and connection parts for possible damage prior to every use of the device. Do not use any defective devices or device parts.
- Ensure that all electric cables outside of the device are protected from damage (e.g. caused by animals). Never use the device if electric cables or the power connection are damaged!
- The electrical connection must correspond to the specifications in chapter Technical data.
- Insert the mains plug into a properly secured mains socket.
- Observe the device's power input, cable length and intended use when selecting extensions to the power cable. Completely unroll extension cables. Avoid electrical overload.

- Before carrying out maintenance, care or repair work on the device, remove the mains plug from the mains socket. Hold onto the mains plug while doing so.
- Switch the device off and disconnect the power cable from the mains socket when the device is not in use.
- Do not under any circumstances use the device if you detect damages on the mains plug or power cable. Defective power cables pose a serious health risk.
- Observe the storage and operating conditions (see chapter Technical data).
- Ensure that the side of the device where the air inlet is found is kept free of dirt and loose objects.
- Ensure that the air inlet and outlet are not obstructed.
- Do not transport the device whilst the fuel line is connected.
- Only transport the device in an upright position.

### Intended use

The device was developed for the purpose of generating hot air and may only be used in roofed over outdoor areas or in well-ventilated interior spaces whilst adhering to the technical data.

The device is suited for heating large rooms such as tents, warehouses, workshops, construction sites, greenhouses or agricultural halls.

It is intended to be used without frequent site changes.

The device may only be used in rooms with sufficient fresh air supply and exhaust discharge.

The device must only be operated with EL (ultra-light) fuel oil and diesel, however not with petrol, heavy fuel oil etc.

The supplied flue pipe may only be used for outdoor applications.

### Improper use

- The device must not be positioned or operated in areas with a high risk of fires or in potentially explosive atmospheres.
- Do not place any objects, e.g. clothing, on the device.
- Do not use the device out of doors, unless under a roof.
- The device must not be operated in rooms with an insufficient combustion air supply.
- Any unauthorised modifications, alterations or structural changes to the device are forbidden.

## Personnel qualifications

People who use this device must:

- be aware of the dangers resulting from heat, fire hazard and insufficient ventilation when working with oil heaters.
- be aware of the dangers that occur when handling fuels such as EL fuel oil and diesel.
- have read and understood the operating manual, especially the Safety chapter.

## Safety devices

The device is equipped with an electronic flame and maximum temperature monitoring system working with a photo cell and a safety thermostat.

The electronic control unit regulates the start-up, stopping and safety shutdown times in case of malfunctions. The control unit comes with a reset button; its colour (operating display) depends on the operating mode:

- indicator light off in pause or standby mode, awaiting the heating request
- continuously green during normal operation of the device
- continuously red during a safety shutdown of the device
- flashing in orange when the operation was interrupted owing to great fluctuations in the power supply ( $T < 175 \text{ V}$  or  $T > 265 \text{ V}$ ); automatic resumption when the voltage stabilizes between 190 V and 250 V

When the device has triggered a safety shutdown:

1. Press the reset button (25) for 3 seconds to resume operation.



### Warning

#### Risk of injury from deflagration!

Unburned fuel oil can accumulate in the combustion chamber and might ignite during the subsequent restart.

Never carry out more than two consecutive restarts.

If the safety shutdown persists:

1. Determine and eliminate the cause of the fault before restarting the device (see chapter Errors and faults).
  2. Press the reset button (25) for at least 5 seconds.
- ⇒ This activates the self-diagnosis programme.

Upon completion of the self-diagnosis routine the colour of the reset button changes to indicate the respectively diagnosed cause of the fault:

- orange flashing indicates that an improperly dimensioned flame was detected during start-up
- red flashing indicates that flame failure was detected during start-up
- flashing that alternates between red and green indicates that flame failure was detected during operation
- continuous orange indicates an internal error of the electronic controller

For more information regarding the determination of the cause of the fault please refer to the chapter Errors and faults.

## Residual risks



### Warning of electrical voltage

Work on the electrical components must only be carried out by an authorised specialist company!



### Warning of hot surface

Parts of the device, especially at the air outlet, become very hot during operation. There is a danger of burning and fire. Do not touch the device during operation! During operation observe a safety distance of at least 3 m to the device front! Observe the minimum distance from walls or other objects according to the technical data!



### Warning of hot surface

Parts of this appliance can become very hot and cause burns. Particular attention is to be paid when there are children or vulnerable persons present!



### Warning of hot surface

Improper handling entails a risk of burning. Only use the device as intended!



### Warning

The device must not be covered, there is an imminent fire hazard!



### Warning

Risk of injury due to poisoning!  
An improper installation of the exhaust system can cause health problems.  
Have the system installed by an expert technician!



### Warning

Dangers can occur at the device when it is used by untrained people in an unprofessional or improper way! Observe the personnel qualifications!



### Warning

The device is not a toy and does not belong in the hands of children.



### Warning

Do not leave the packaging lying around. Children may use it as a dangerous toy.

## Behaviour in the event of an emergency

1. In case of an emergency, immediately extinguish the pilot flame by actuating the on/off switch (position **0**).
2. Remove persons from the danger area.
3. Disconnect the device from the mains feed-in:  
Hold onto the mains plug while pulling the power cable out of the mains socket.
4. Do not reconnect a defective device to the mains.

## Information about the device

### Device description

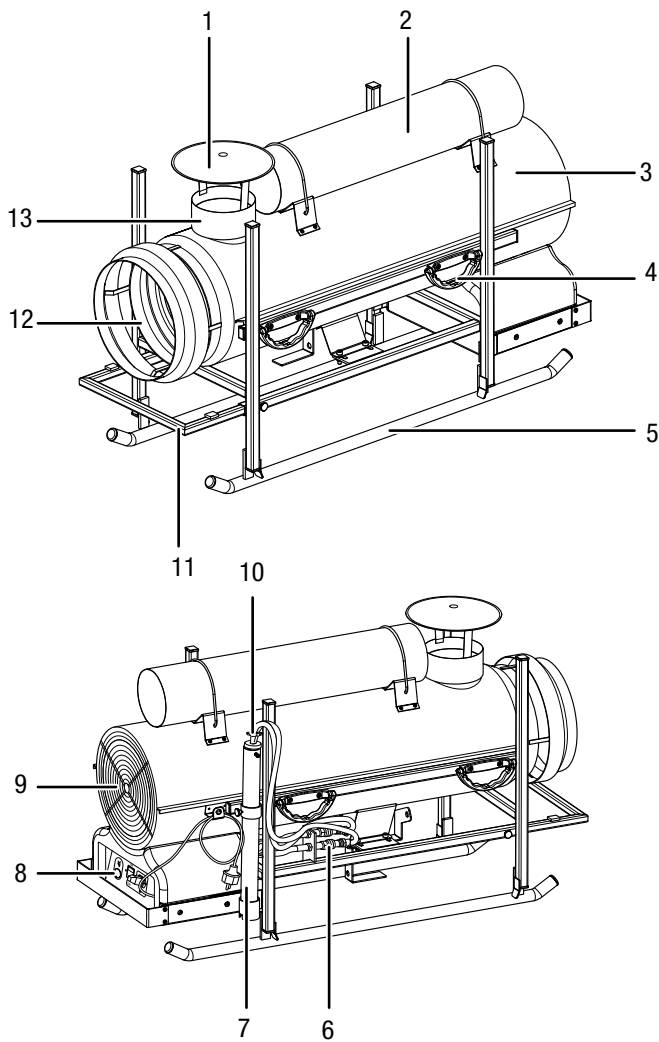
The oil heater IDS 30 F serves the purpose of heating room air so as to heat large rooms and tents in a timely manner.

Since it is not equipped with an integrated tank, it is ideally suited for mobile applications and frequently changing locations.

The oil heater runs on fuel oil. It is a device with indirect combustion that is equipped with an exhaust gas connection for the discharge of exhaust gases via the chimney. It is refuelled externally using a tank or jerrycan.

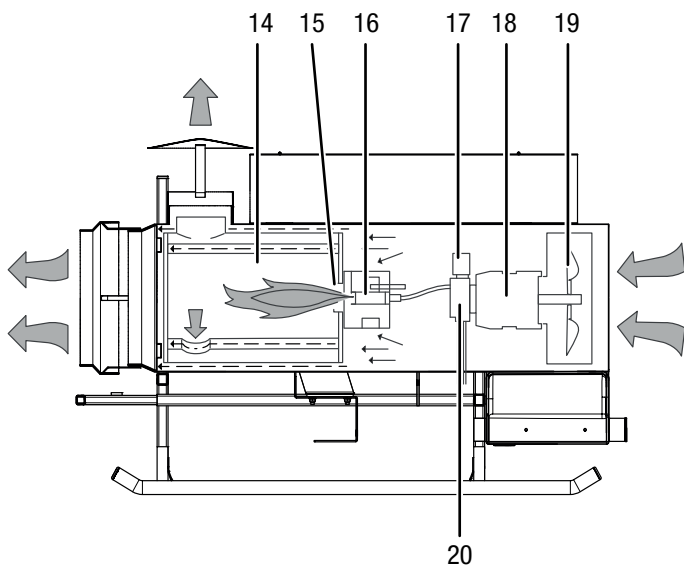
The selection option between two operating modes permits both a manual regulation of the oil heater by the user and an automatic control aided by an external thermostat.

Device depiction



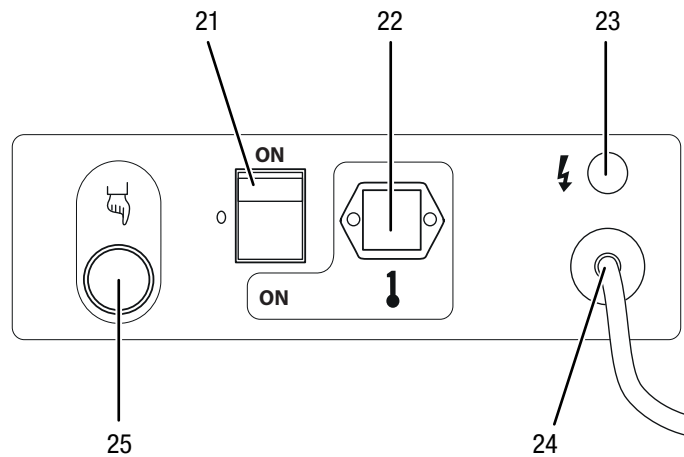
No.	Designation
1	Rain cap
2	Flue pipe
3	Housing
4	Transport handle
5	Frame
6	Tank line connection
7	Filler neck retainer
8	Control panel
9	Air inlet
10	Optional connection set for jerrycan (6.100.006.184)
11	Frame attachment
12	Air outlet
13	Chimney connection for flue gas evacuation

Schematic inside view



No.	Designation
14	Combustion chamber
15	Burner
16	Nozzle
17	Magnet valve
18	Motor
19	Fan
20	Pump

Control panel



No.	Designation
21	Selector switch <b>ON</b> (continuous operation) – <b>0</b> (off) – <b>ON</b> (thermostat)
22	Thermostat socket
23	Lamp
24	Power cable
25	Reset button

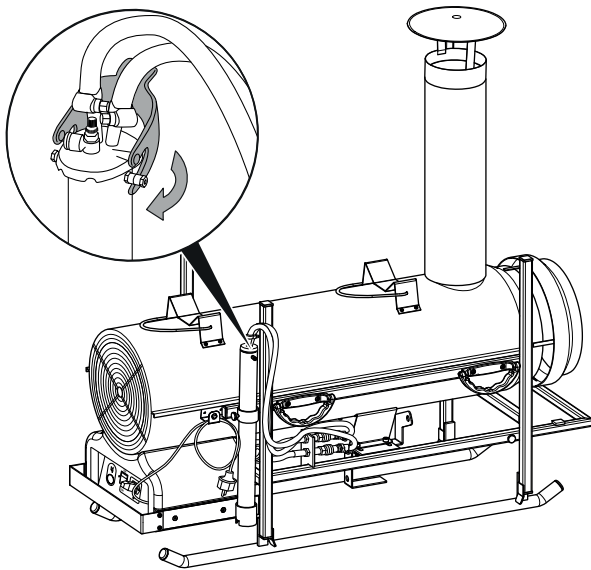


## Transport and storage

### Transport

**Before** transporting the device, observe the following:

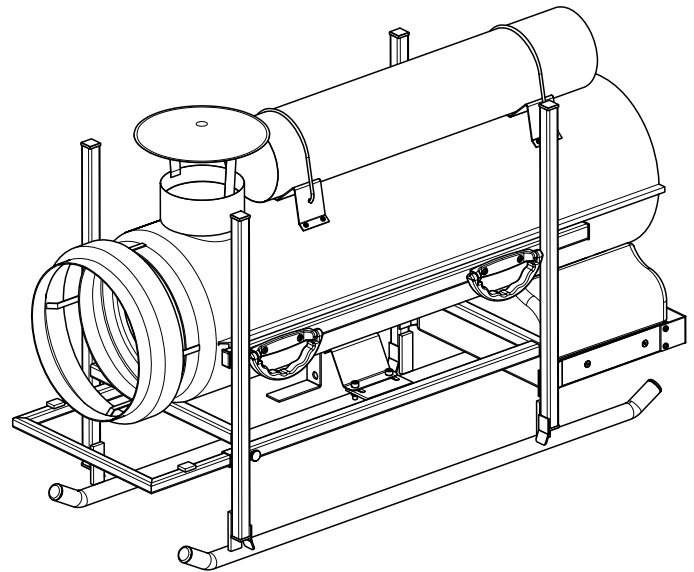
- Switch off the device.
- Wait until the device has cooled down completely.
- Loosen the quick couplings at the tank connection.
- When using the optional jerrycan adapter:
  - Remove the nozzle for refuelling from the jerrycan.
  - Insert the filler neck in the retainer.
  - Close the fastener.



For transporting the device, disassemble the flue pipe and put it into the designated holding fixture.

Proceed as follows to disassemble the flue pipe:

1. Remove the rain cap from the flue pipe.
2. Disconnect the flue pipe from the device.
3. Put the flue pipe into the holding fixture at the device.
4. Attach the rain cap to the chimney connection.
5. Check that the flue pipe is mechanically secured.



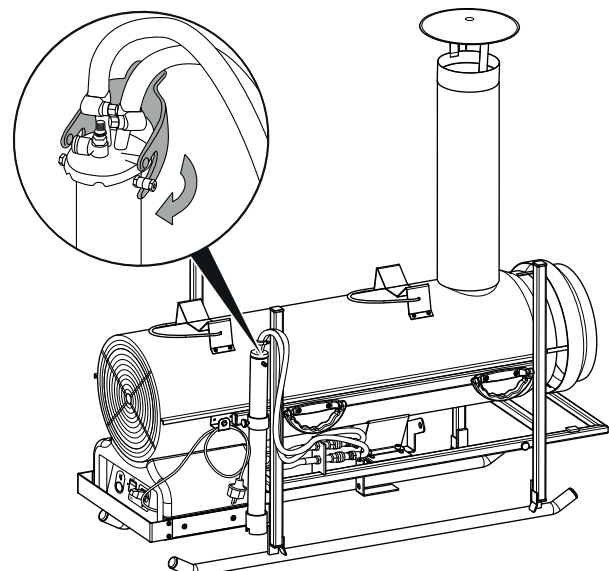
**While** transporting the device, observe the following:

- Always utilize the help of another person to transport the device.
- Use the transport handles.
- Please note that the protective bars are not fit to be used as transport handles.

### Storage

**Before** storing the device, proceed as follows:

- Switch off the device.
- Wait until the device has cooled down completely.
- Loosen the quick couplings at the tank connection.
- When using the optional jerrycan adapter:
  - Remove the nozzle for refuelling from the jerrycan.
  - Insert the filler neck in the retainer.
  - Close the fastener.



When the device is not being used, observe the following storage conditions:

- dry and protected from frost and heat
- in an upright position where it is protected from dust and direct sunlight
- with a cover to protect it from invasive dust if necessary
- up to 2 devices may be stacked on top of one another for storage purposes

## Assembly and installation

### Scope of delivery

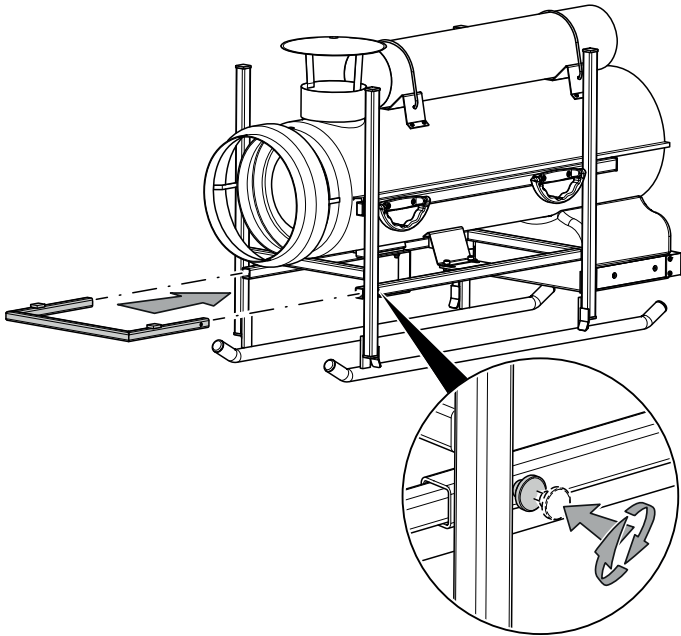
- 1x Device IDS 30 F
- 1x Filler neck retainer
- 1x Frame attachment
- 1x Rain cap
- 1x Exhaust duct extension

### Assembly

#### Mounting the transport frame

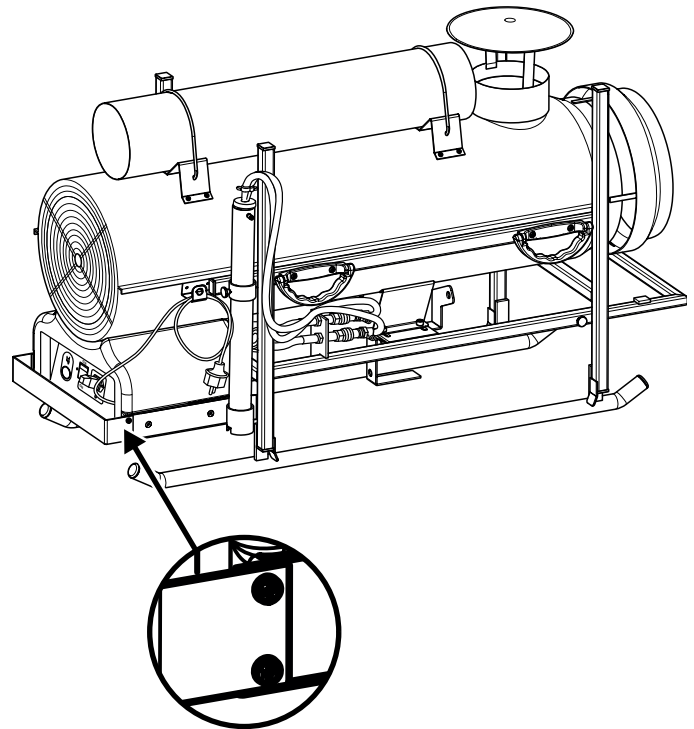
Upon delivery the transport frame is already partially preassembled. The protective bars at the front and rear are still to be mounted.

1. Attach the first protective bar at the front of the device.

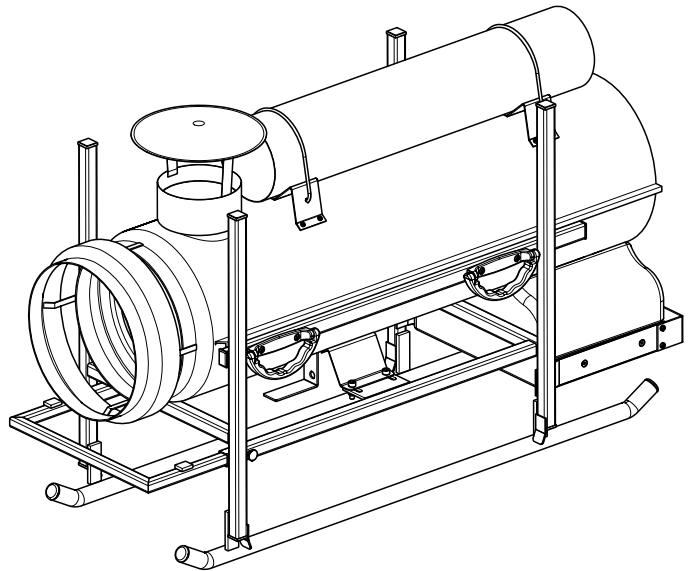


2. Tighten the screws on both sides.

3. Affix the rear protective bar using 2 screws on each side.



4. Check the protective bars for tight fit.





### Flue gas evacuation

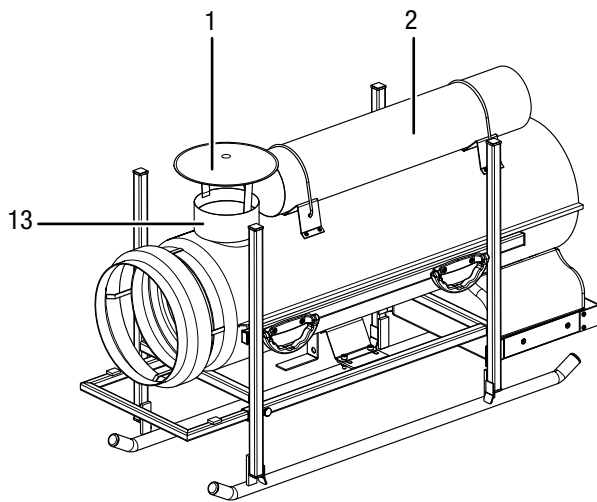
- Prior to planning the flue gas system, gather information about the national legislation and contact a responsible specialist (cf. DIN 18160 in Germany).
- Ensure an unimpeded and sufficient combustion air supply (e.g. by means of ventilation openings in doors, ceilings, windows, walls or via interconnected airways).
- Have the exhaust emission of the burner checked at regular intervals.

### Mounting the flue pipe

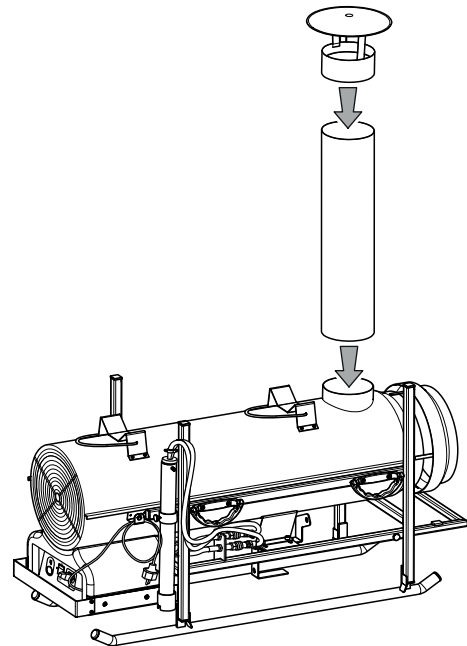
The flue pipe may only be used for outdoor flue gas evacuation applications.

Proceed as follows to attach the flue pipe to the device:

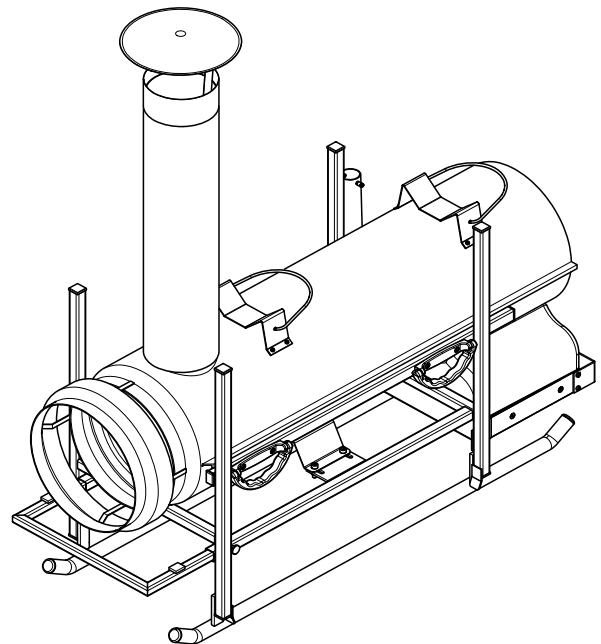
1. Remove the flue pipe (2) from the holding fixture.
2. Detach the rain cap (1) from the chimney connection (13).



3. Connect the flue pipe (2) to the chimney connection (13) of the device.



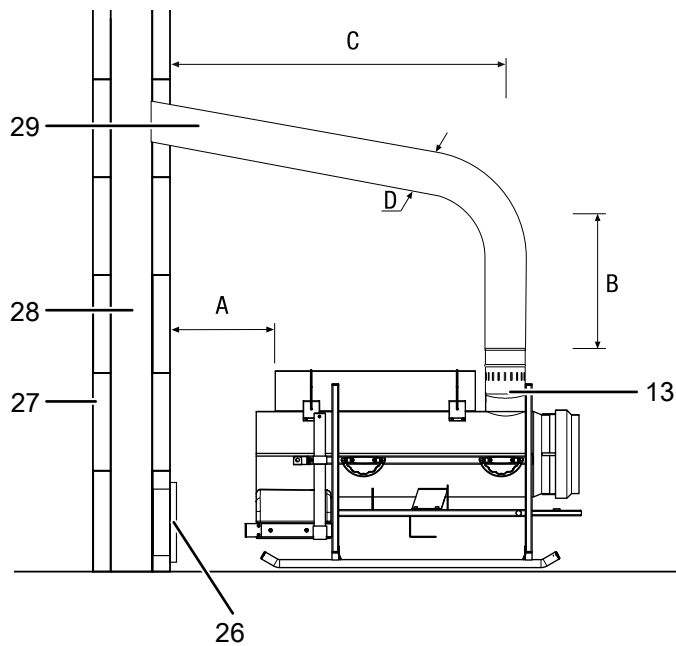
4. Put the rain cap (1) onto the flue pipe (2).



5. Check the flue pipe for tight fit.

### Chimney duct

The following schematic representation should be considered when planning a chimney duct:



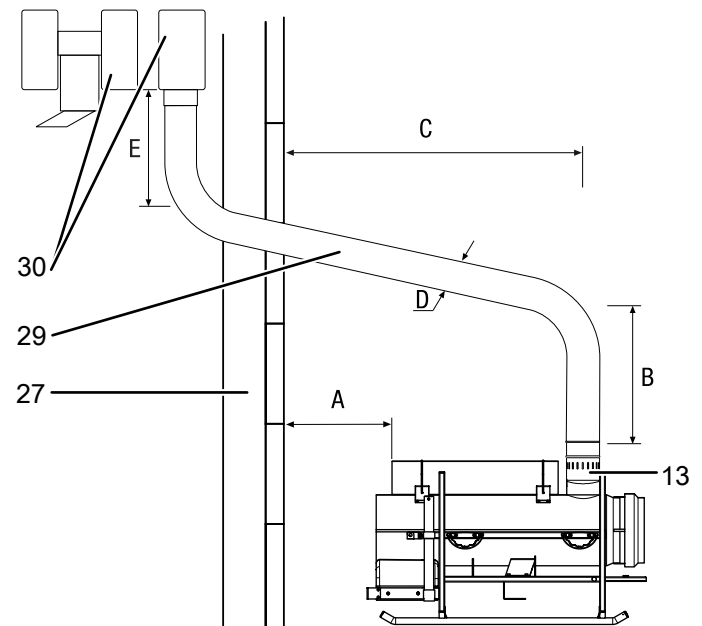
No.	Designation
13	chimney connection
26	cleaning opening with explosion protection flap
27	outer wall
28	flue – inside min. 20 x 20 cm
29	wall duct with elbow min. 5°

Dimensions:

- A: min. 1 m
- B: min. 1 m
- C: as short as possible
- D:  $\geq \varnothing 120 \text{ mm} / 150 \text{ mm}$

### Wall duct

The following schematic representation should be considered when planning a wall duct:



No.	Designation
13	chimney connection
27	outer wall
29	wall duct with elbow min. 5°
30	draught booster H-shaped

Dimensions:

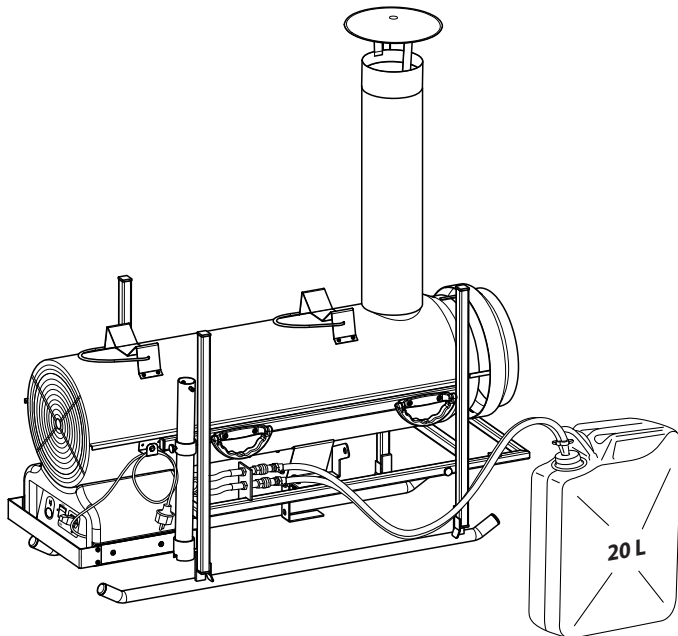
- A: min. 1 m
- B: min. 1 m
- C: as short as possible
- D:  $\geq \varnothing 120 \text{ mm} / 150 \text{ mm}$
- E: min. 1 m

## Tank connection

Quick couplings are used to connect the device to an external tank or the optional jerrycan.

1. Connect the feed and return hoses to the device.

Example for refuelling from a jerrycan:



## Positioning

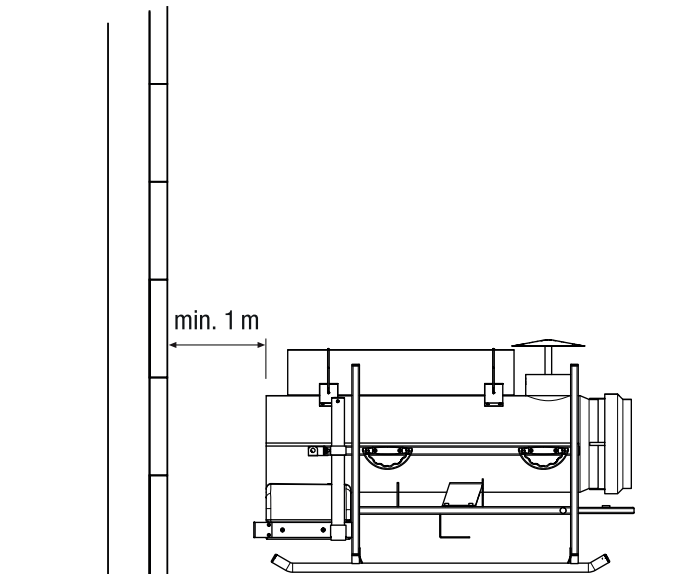
A number of spatial and technical conditions have to be considered for the selection of the device's installation site. Non-observance may impair the proper functioning of the device or the accessories or can entail risks of personal injury and property damage.

The following is to be observed for positioning:

- The device may only be operated on roofed over surfaces.
- The device is to be set up in a stable position on incombustible ground.
- The device must be set up in close proximity to a chimney, an outer wall or on an open, ventilated surface.
- The device must be connected to a properly secured mains power socket.
- The room where the device is positioned must be sufficiently ventilated.

Ensure a sufficient fresh air supply, especially when there are people or animals in the same room with the device!

- The minimum distance between the wall and the air inlet opening of the device must be at least 2 m (see figure).
- The minimum distance between the device and combustible materials must be at least 3 m.
- The inlet and outlet openings must not be covered.
- There must be no walls or large objects near the device.
- There must be a sufficient number of fire extinguishers available.



## Start-up

- Check the scope of delivery of your device for completeness. If an accessory part is missing, please contact the Trotec customer service or the specialist dealer where you purchased the device.
- Check the device and its connection parts for potential damage.
- Observe the conditions described in the chapter Positioning.
- Install the exhaust system of the device in a technically correct manner. You can also connect the device to a chimney or an outer wall as illustrated in chapter Assembly.
- Connect the device to an external tank or jerrycan as described in the Assembly chapter.
- Check the device for its proper condition prior to start-up and at regular intervals during application.
- Check whether the characteristics of the power grid conform to those on the nameplate.
- Each time before you plug the mains plug into the mains socket and switch on the device, make sure that the fan is moving freely.
- Connect the mains cable to a properly secured socket (230 V / 50 Hz / 10 A). On construction sites, there must be a residual current device (RCD) installed upstream of the socket in accordance with national regulations (in Germany: VDE 0100/0105).

The device is now ready for operation.

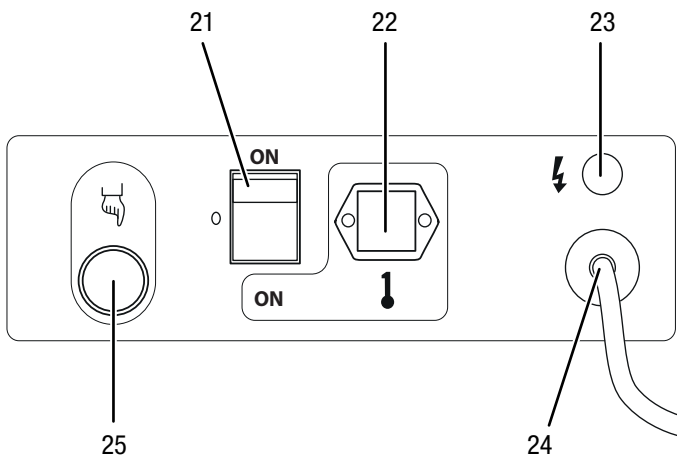
## Operation

The device may only be used by accordingly instructed persons.

### Switching the device on

The device has two operating modes:

- Manual operation
- Automatic operation with external thermostat (article no. 6.100.007.016)



### Manual operation

For continuous heat generation, here, the device operates independently of a control unit.

1. Switch the device on by setting the position of the selector switch (21) to **ON** (continuous operation).

### Automatic operation

Automatic operation of the device is only an option with a connected controller (optional), e.g. a thermostat. The thermostat is connected to the thermostat socket (22).

1. Switch the device on by setting the position of the selector switch (21) to **ON** (thermostat).

⇒ To confirm the completion of the start-up process, the electronic control unit causes the reset button (25) to briefly flash in red.

### Switching the device off

#### Notice

Damage to the device due to overheating!

Never switch off the device by pulling the mains plug.

This may lead to overheating!

Switch off the device properly. Only pull the mains plug once the fan motor has stopped completely.

1. Switch off the device by setting the selector switch to position **0**.
2. If you use a thermostat, switch off the device using the settings of the controller (e.g. by setting a lower temperature at the thermostat).
  - ⇒ The flame goes out and the fan continues to run for approx. 90 seconds in order to cool down the burner.
3. Wait until the automatic after-cooling is completed.
4. Secure the device against inadvertent switch-on by pulling the mains plug.

### Restarting the device after a malfunction

During initial start-up and after the fuel oil circuit has been drained completely, the fuel oil supply to the nozzle may be insufficient. In this case, the flame monitoring system will respond and the device will be blocked.

1. Wait for approx. 1 minute.
2. Press the reset button (25) for approx. 5 seconds.
3. Switch the device on.

If the device still does not start:

- Make sure that the device is properly connected to an external tank or a jerrycan (see chapter Assembly).
- Press the reset button.

To detect further causes of error, see chapter Errors and faults.

## Available accessories

Accessories	Article number
Thermostat with 10 m cable	6.100.007.016
Connection kit for external oil tank	6.100.006.185
Adapter set tank kit – oil hose	7.210.000.003
Tank line with quick couplings, length 5 m	6.100.006.037
Connection set for external jerrycan	6.100.006.184
Tank filling level indication	6.100.006.160
Filler neck oil filter	6.100.006.161
90° arc connection for exhaust gas pipe	6.100.006.216
Air hose Tronect SP-C, length 7.6 m	6.100.001.265

## Errors and faults



### Warning

Risk of injury due to improper repair!

Never try to make any modifications or repairs on the device.

Unauthorised modifications can lead to serious injuries or death.

Have a certified specialist workshop perform the repair work.

Error / fault	Operating display	Self-diagnosis indication	Cause	Remedy
Fan does not start and flame does not ignite	Off	-	Controller set incorrectly	Check if the controller is set correctly (e.g. the temperature set at the thermostat must be higher than the room temperature).
			Controller faulty	Have the controller exchanged by the customer service.
Fan does not start or switches off during start-up or operation	Orange flashing	-	No power supply	Check the characteristics of the electrical system (230 V - 1~ - 50 Hz). Check the functionality and position of the selector switch. Check the fuse for soundness.
			Voltage < 175 V	Check the supply voltage. The device will restart automatically when the voltage value exceeds 190 V.
			Voltage > 265 V	Check the supply voltage. The device will restart automatically when the voltage value falls below 250 V.
Fan switches off during start-up or operation	Continuous red indication	Orange flashing	Flame present prior to ignition of the transformer	Instruct the customer service to have the device cleaned and fuel oil residues removed from the combustion chamber.
			Photo cell faulty	Have the photo cell exchanged by the customer service.
		Red flashing or flashing that alternates between red and green	Motor winding interrupted or blown	Have the motor exchanged by the customer service.
			Motor bearing blocked	Have the motor bearing exchanged by the customer service.
			Motor capacitor blown	Have the motor capacitor exchanged by the customer service.
			No ignition	Check the connections of the ignition cables at the electrodes and the transformer. Check the position and the distance of the electrodes. Check whether the electrodes are clean. Have the transformer exchanged by the customer service.
			Flame monitoring system faulty	Have the flame monitoring system exchanged by the customer service.
			Photo cell faulty	Have the photo cell cleaned or exchanged by the customer service.
			Burner is supplied with no or insufficient fuel oil	Charge the customer service with the following tasks: <ul style="list-style-type: none"> <li>to have the coupling between the pump and the motor checked for soundness.</li> <li>to have the fuel oil circuit checked for intruded air and to have the lines and filter seal checked for tightness.</li> <li>to have the nozzle cleaned or exchanged.</li> </ul>
			Magnet valve faulty	Charge the customer service with the following tasks: <ul style="list-style-type: none"> <li>to have the electrical connections checked.</li> <li>to have the safety thermostat LI checked.</li> <li>to have the magnet valve cleaned or exchanged.</li> </ul>
		Continuous orange indication	Internal error of the electronic control unit	Instruct the customer service to have the control unit reset; try at least twice. If the problem persists, have the control unit changed.



Error / fault	Operating display	Self-diagnosis indication	Cause	Remedy
Fan starts and flame burns with smoke formation	Continuous green indication	-	Insufficient supply of combustion air	Remove all obstacles and obstructions from the inlet and/or outlet openings. Have the position of the adjustment ring for the regulation of the air supply checked by the customer service. Have the supporting disc of the burner cleaned by the customer service.
			Excessive supply of combustion air	Have the position of the adjustment ring for the regulation of the air supply checked by the customer service.
			Used fuel oil contaminated or contains water	Replace used fuel oil with clean fuel oil. Clean the fuel oil filter.
			Air inside the fuel oil circuit	Have the lines and the fuel oil filter checked for tightness by the customer service.
			Insufficient fuel oil quantity at the burner	Charge the customer service with the following tasks: <ul style="list-style-type: none"> <li>• to have the pump pressure checked.</li> <li>• to have the nozzle cleaned or exchanged.</li> </ul>
			Excessive amount of fuel oil at the burner	Charge the customer service with the following tasks: <ul style="list-style-type: none"> <li>• to have the pump pressure checked.</li> <li>• to have the nozzle exchanged.</li> </ul>
Device does not switch off	Continuous green indication	-	Sealing of the magnet valve faulty	Have the magnet valve exchanged by the customer service.

## Technical annex

### Technical data

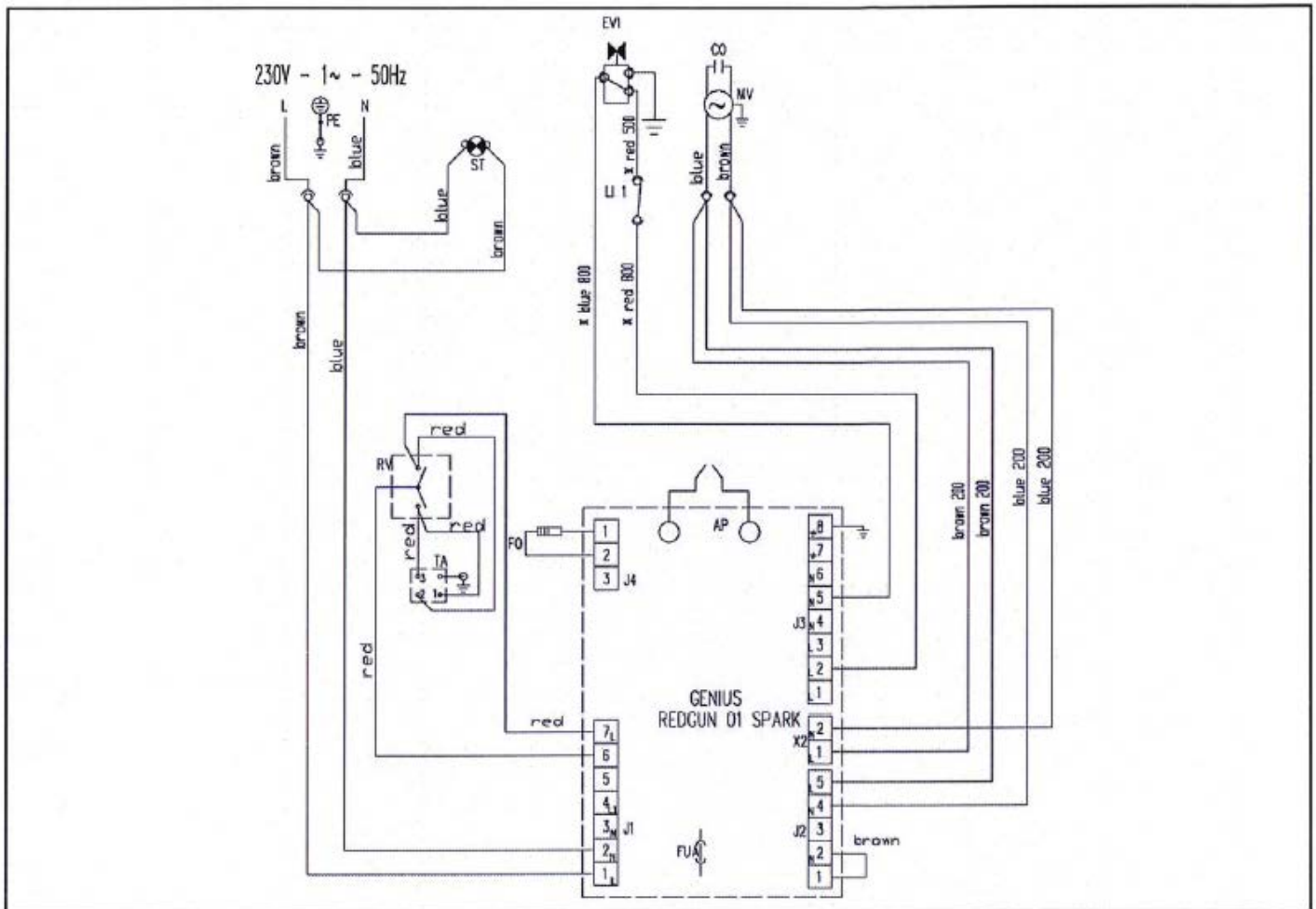
Parameter	Value
Article number	1.430.000.128
Method of heating	indirect
Amount of air	1150 m <sup>3</sup> /h
Fan	Axial fan
Max. nominal heat input	34.1 kW
Nominal heat output	28.8 kW (24764 kcal)
Temperature increase $\Delta T$	70 °C
Input voltage	230 V / 50 Hz
Current consumption	1.56 A
Max. oil consumption	3.25 l/h
Air transport hose connection Ø	300 mm
Chimney connection Ø	150 mm
Sound level (distance 1m)	75.3 dB(A)
Weight	56 kg
Dimensions (length x width x height)	1260 x 475 x 770 (mm)
Minimum distance to walls or other objects	1 m

### Fuels

The following fuels are approved for the device:

- EL fuel oil
- Diesel

## Wiring diagram



AP	Control unit	FO	Photo cell
TA	Thermostat connection	CO	Condenser
ST	Indicator light	MV	Fan motor
LI 1	Safety thermostat	FUA	Fusing 3.15 A
EV	Magnet valve	RV	Selector switch
1			

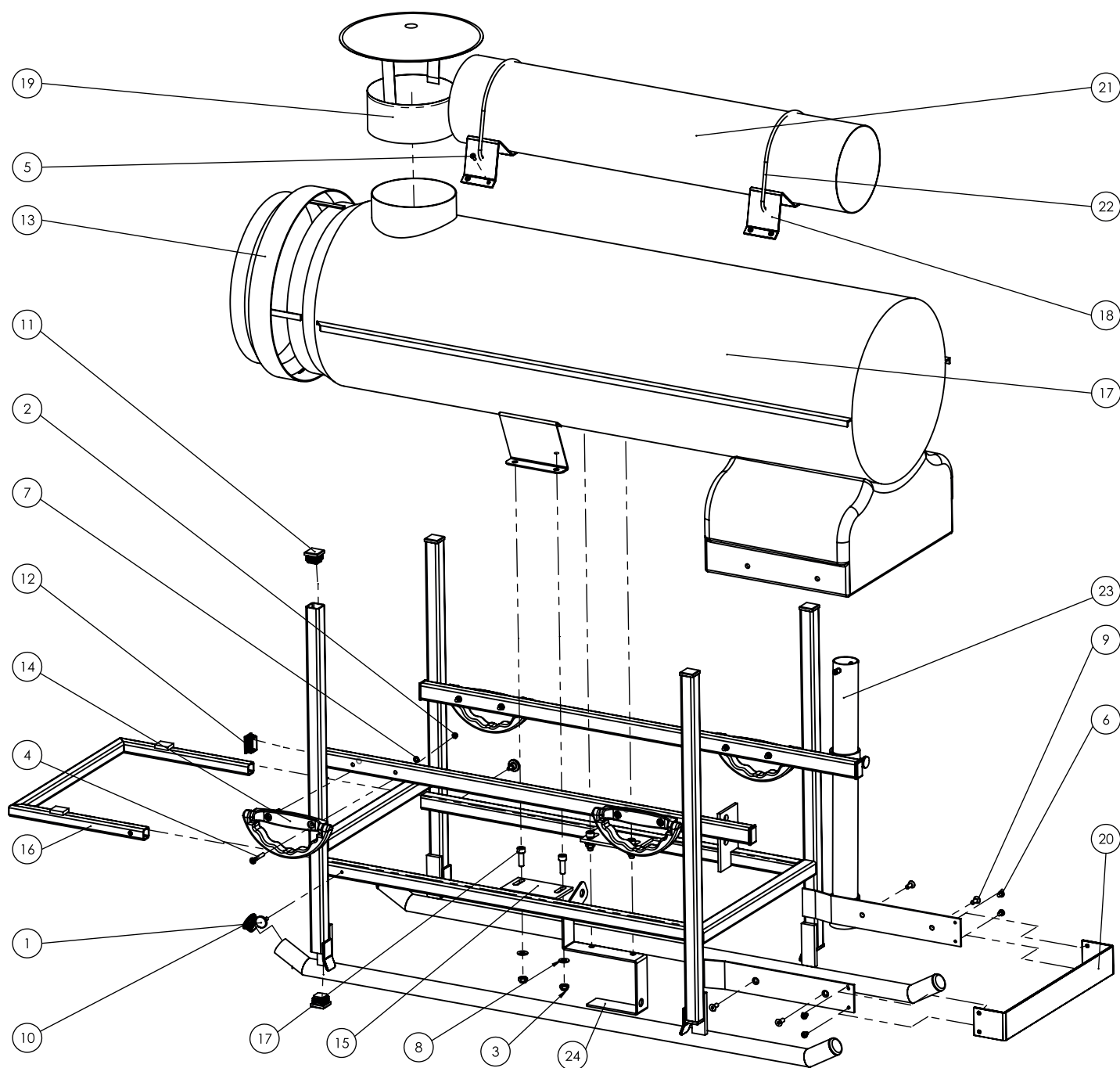
## Spare parts drawing and list

### IDS 30 F – spare parts 1



#### Info

The position numbers of the spare parts differ from those describing the positions of other parts mentioned in this operating manual.



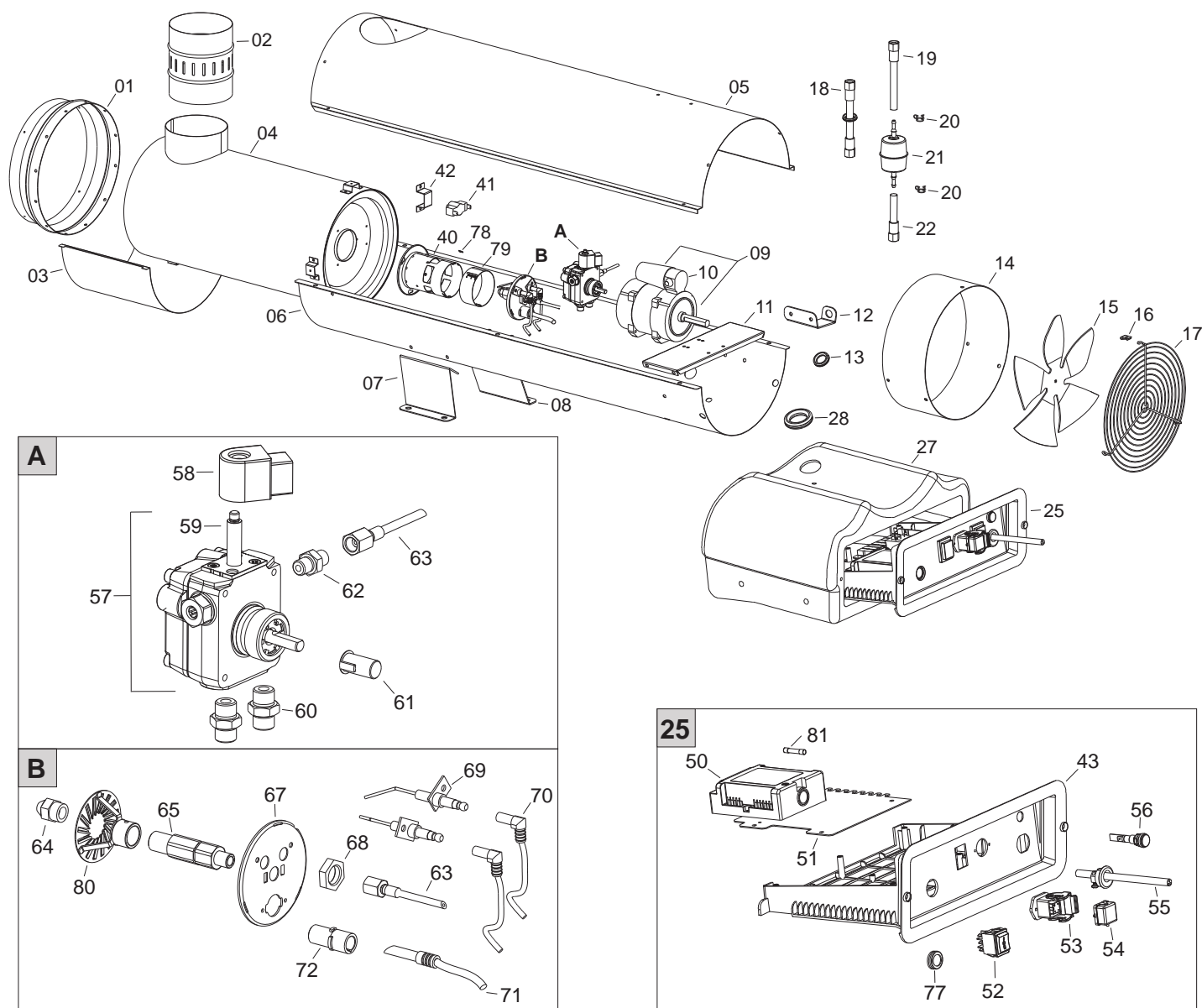
No.	Spare part	Article number
1	screw	H 1000 3012
2	nut	P 1000 0210
3	nut	P 1000 0099
4	screw	P 1000 4288
5	screw	P 1000 0610
6	screw	P 1000 1265
7	washer	P 1000 0211
8	washer	P 1000 0016
9	screw	P 1000 4292
10	finned plug	P 1000 5095
11	finned plug	P 1000 4246
12	finned plug	P 1000 4247
13	hose connection	6100006163
14	handle	P 1000 1246
15	frame	P 1000 4272
16	protective bar	P 1000 6267
17	oil heater	see IDS 30 F – spare parts 2
18	pipe holding fixture	P 1000 5106
19	rain cap	6 10000 6222
20	front plate	P 1000 6268
21	pipe	6.100.006.210
22	bungee cord	P 1000 4243
23	receptacle	P 1000 6269
24	mount	P 1000 4304

# IDS 30 F – spare parts 2



## Info

The position numbers of the spare parts differ from those describing the positions of other parts mentioned in this operating manual.





No.	Spare part	Article number	No.	Spare part	Article number
01	outlet cone	G06075-1006	43	control box panel	G06153
02	chimney connection	G06077	50	flame monitoring device	E40128
03	insulation plate	G06079	51	mounting plate	G06184
04	combustion chamber	G06301	52	double-pole switch	E10102-P
05	top section of the body	G06300-1006	53	thermostat socket	E20640
06	bottom section of the body	G06271-1006	54	thermostat socket cover	E20665
07	support bracket body	G06065-9005	55	power supply cable	E30448
08	support bracket body	G06088-9005	56	lamp	E11030
09	engine	E10692	57	fuel oil pump	T20456
10	capacitor	E11246	58	solenoid valve coil	T20458
11	support bracket engine	G06217	59	solenoid valve housing	T20461
12	power cable retainer	G06068-9005	60	connector, Fe	I20104
13	cable feed-through	C30352	61	engine / pump coupling	E10698
14	air conveyor	G06070-1006	62	connector, Fe	I20115
15	fan	T10207	63	fine hose	I40192
16	retaining clip	M20412	64	nozzle	T20361
17	air inlet grid	P30165	65	nozzle holder	I33007
18	flexible fuel oil hose	I40328	67	supporting disc burner	G06228
19	flexible fuel oil hose	I40327	68	lock nut, brass	I31034
20	clamping piece	C30729	69	ignition electrode	E10248
21	filter	I30414	70	high-voltage cable	G02078
22	flexible fuel oil hose	I40326	71	photo cell	E40131
25	control box	G00309	72	LDR retainer	E50327
27	switchboard cover	P50129	77	lock-out switch protection	E20418
28	cable feed-through	C30372	78	terminal strip	E20671
40	burner tube	G06181	79	air regulating damper	G06183
41	safety thermostat	E50109	80	baffle plate	G01077
42	support bracket thermostat	G06221	81	fuse	E10303

## Disposal

### Oil heater



■ In the European Union, electronic equipment must not be treated as domestic waste, but must be disposed of professionally in accordance with Directive 2012/19/EU of the European Parliament and of the Council of 4 July 2012 on waste electrical and electronic equipment (WEEE). At the end of its life, please dispose of this device according to the valid legal requirements.

### Fuel oil

The fuel oil must be drained from the device and collected. Fuels are to be disposed of according to the national regulations.

Trotec GmbH & Co. KG

Grebbener Str. 7  
D-52525 Heinsberg

☎ +49 2452 962-400

☎ +49 2452 962-200

[info@trotec.com](mailto:info@trotec.com)

[www.trotec.com](http://www.trotec.com)